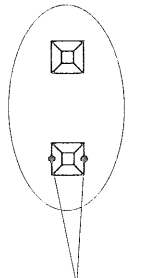
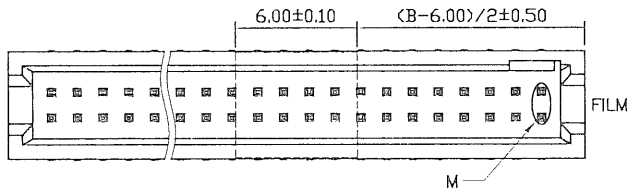
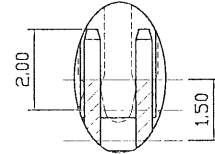
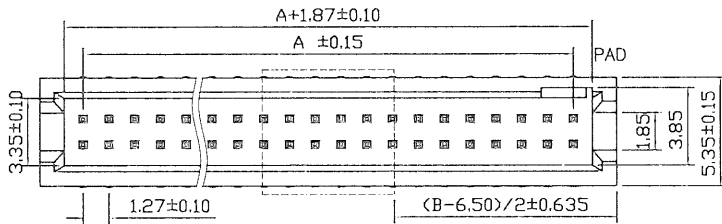


No. of Contacts	DIMENSIONS		REMARK (備註)	PAD
	A	B		
6	2.54	6.81	o	
8	3.81	8.08	o	
10	5.08	9.35	o	o
12	6.35	10.62	o	o
14	7.62	11.89	o	o
16	8.89	13.16	o	o
18	10.16	14.43	o	o
20	11.43	15.70	o	o
22	12.70	16.97	o	o
24	13.97	18.24	o	o
26	15.24	19.51	o	o
28	16.51	20.78	o	o
30	17.78	22.05	o	o
32	19.05	23.32	o	o
34	20.32	24.59	o	o
36	21.59	25.86	o	o
38	22.86	27.13	o	o
40	24.13	28.40	o	o
42	25.40	29.67	o	o
44	26.67	30.94	o	o
46	27.94	32.21	o	o
48	29.21	33.48	o	o
50	30.48	34.75	o	o
52	31.75	36.02	o	o
54	33.02	37.29	o	o
56	34.29	38.56	o	o
58	35.56	39.83	o	o
60	36.83	41.10	o	o
62	38.10	42.37	o	o
64	39.37	43.64	o	o
66	40.64	44.91	o	o
68	41.91	46.18	o	o
70	43.18	47.45	o	o
72	44.45	48.72	o	o
74	45.72	49.99	o	o
76	46.99	51.26	o	o
78	48.26	52.53	o	o
80	49.53	53.80	o	o
82	50.80	55.07	o	o
84	52.07	56.34	o	o
86	53.34	57.61	o	o
88	54.61	58.88	o	o
90	55.88	60.15	o	o
92	57.15	61.42	o	o
94	58.42	62.69	o	o
96	59.69	63.96	o	o
98	60.96	65.23	o	o
100	62.23	66.50	o	o



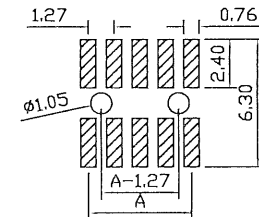
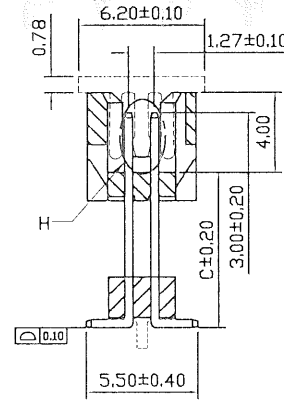
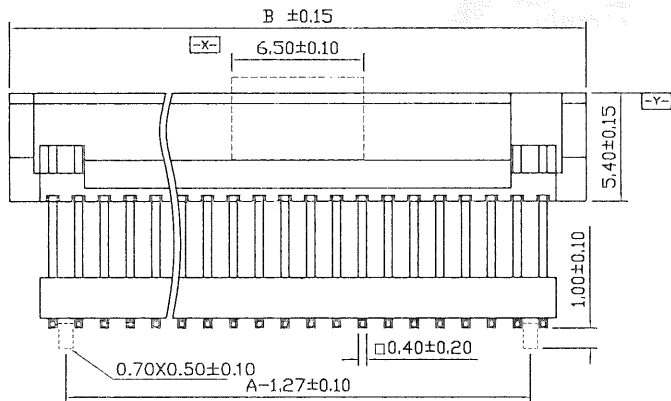
Measure points

DETAIL H
SCALE 4:1



DETAIL H
SCALE 2:1

function area



Recommended PCB Layout
(PCB TOLERANCE ±0.05)

NOTES: (UNLESS OTHERWISE SPECIFIED)

1. DIMENSION SHALL BE INTERPRETED PER ANSI Y14.5M-1994.
2. CONTACT RETENTION FORCE: 250g MIN, PER CONTACT.
3. DURABILITY: 50 CYCLES MIN.
4. RATING VOLTAGE: 30V A/DC.
5. CURRENT RATING: 1 AMPERE.
6. CONTACT RESISTANCE: 20 m ohms MAX, INITIAL.
7. DIELECTRIC WITHSTANDING VOLTAGE: 500V AC rms./MINUTE.
8. INSULATION RESISTANCE: 5000 Megohms MIN.
9. HARMFUL MATERIAL SHOULD BE COMPLIANT TO DOC. "EI-0005" STANDARDS.
10. PRODUCT NUMBER MATRIX:

SPOD-XX-X-C-X-X

No. of Contacts
Contact Plating

Definition	Code
● Tin plated:	A
● Gold plated:	
flash B 15μ" F	
10μ" E 30μ" J	
● Duplex plating:	
flash K 15μ" P	
10μ" N 30μ" U	
● Standard: B	
● Prefix "V" means lead free plating.	

NULL:TUBE(W/O PAD)
P :PAD+TUBE
R :PAD+REEL
F :FILM+TUBE

0:W/O Locating peg
1:With Locating peg

Pin Length mm

Diagram	Molding description
○	mass production & assemble mold
⊙	sample & assemble mold
⊕	mass production & fix mold
⊖	sample & fix mold

	TOLERANCE TABLE		SCALE 1:1	DRAWN	江蒙	DATE	2021/11/05	DWG. NO.	600-0000-175	TITLE	REV.
	X ± 0.50	X° ± 3°	UNIT mm	CHECK	李景涛	DATE	2021/11/06	PARTS NO.(INTENDED USE)	SPOD-XX-X-C-X-X	CUSTOMER DRAWING	26
	.X ± 0.25	.X° ± 2°	SIZE A4	APPROVE	江蒙	DATE	2021/11/06				SHEET
	.XX ± 0.20										

版次	ECN 编码	描述	设计/日期
24	CH10080162	改前	改后
25	CW10120042	新增SPOD-XX-X-125-X-*料号	杨加林_2010/08/26
26	EL21110033	修改"C"尺寸标注之图面	King.yan
		修改图框	江蒙_2021/11/05

