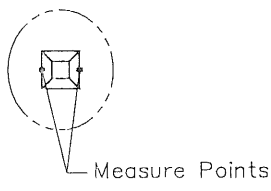
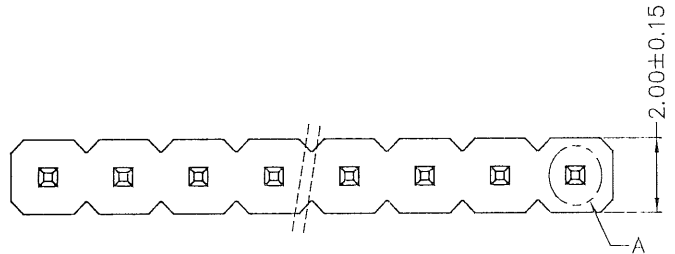
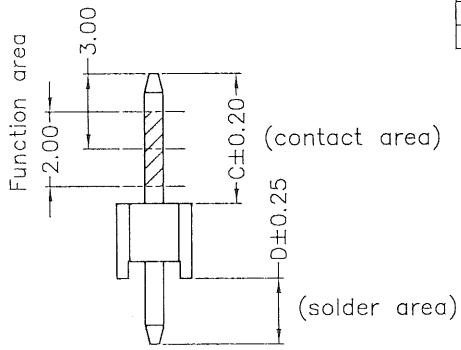
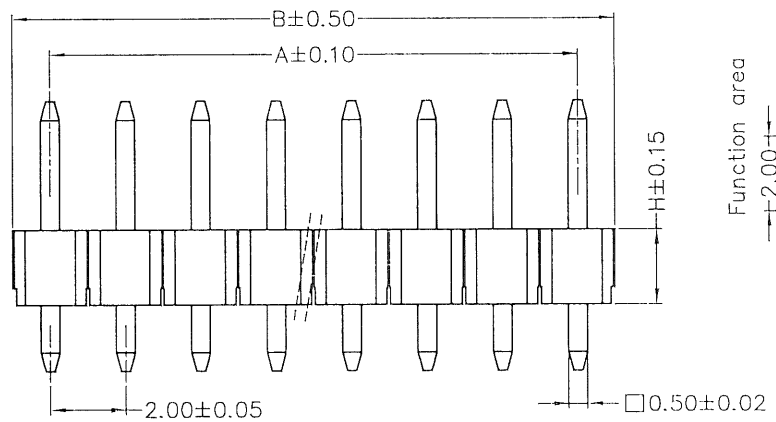


No. of Contacts	DIMENSIONS	
	A	B
02	2.00	4.00
03	4.00	6.00
04	6.00	8.00
05	8.00	10.00
06	10.00	12.00
07	12.00	14.00
08	14.00	16.00
09	16.00	18.00
10	18.00	20.00
11	20.00	22.00
12	22.00	24.00
13	24.00	26.00
14	26.00	28.00
15	28.00	30.00
16	30.00	32.00
17	32.00	34.00
18	34.00	36.00
19	36.00	38.00
20	38.00	40.00
21	40.00	42.00
22	42.00	44.00
23	44.00	46.00
24	46.00	48.00
25	48.00	50.00
26	50.00	52.00
27	52.00	54.00
28	54.00	56.00
29	56.00	58.00
30	58.00	60.00
31	60.00	62.00
32	62.00	64.00
33	64.00	66.00
34	66.00	68.00
35	68.00	70.00
36	70.00	72.00
37	72.00	74.00
38	74.00	76.00
39	76.00	78.00
40	78.00	80.00



Detail A
Scale 2:1



NOTES: (Unless otherwise specified)

- Dimension shall be interpreted per ANSI Y14.5M.
- Materials:
 - Insulator material: Thermoplastic, UL 94V-0; Color: Black.
 - Contact material: Copper Alloy
- Current Rating: 2A Per Pin.
- Voltage Rating: 30V AC/DC.
- Working Temperature: -40°C ~ +105°C.
- Harmful material should be compliant to doc. "EI-0005" standards.
- Product number matrix:

XYT-XXSX-X-C/D-**-*

Definition	Code
Brass	L
Brass(REEL)	B
Phosphor Bronze	P
⊙ Standard: L	

Pin type

H	SX
1.50	S1
2.00	S2

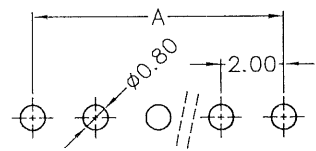
Number of Contacts

Pin Length

Contact Plating

Definition	Code
⊙ Tin plated	A
⊙ Gold plated:	
flash B	5 u" D 10u" E
15u" F	20u" G 30u" J
⊙ Duplex plated:	
flash K	5 u" M 10u" N
15u" P	20u" Q 30u" U
⊙ Standard: B	
All plating is lead free	

NULL: PE Bag
G: TUBE
K: REEL
R: PAD+REEL
NULL: Thermoplastic
F: High Temperature Thermoplastic
H: Halogen free



RECOMMENDED PCB LAYOUT
(PCB TOLERANCE ±0.05)

	TOLERANCE TABLE		SCALE 5:1	DRAWN 刘恋	DATE 2022/01/07	DWG. NO. 600-0000-0287	TITLE	REV. 24
	X ± 0.30	X.° ± 3°	UNIT mm	CHECK 李昌涛	DATE 2022/01/10	PARTS NO. (INTENDED USE) XTY-XXSX-X-C/D-*	CUSTOMER DRAWING	SHEET 1/1
	.X ± 0.25	.X.° ± 2°	SIZE A4	APPROVE 刘恋	DATE 2022/01/10			
	.XX ± 0.20							

A B C D E