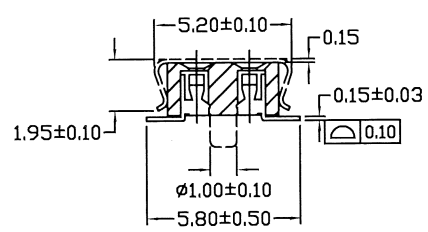
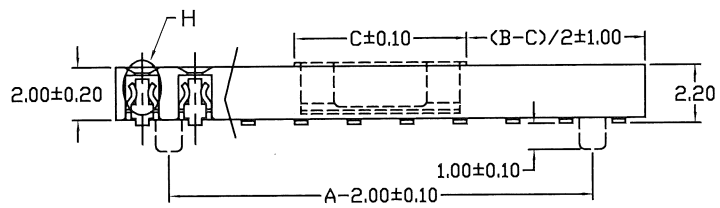
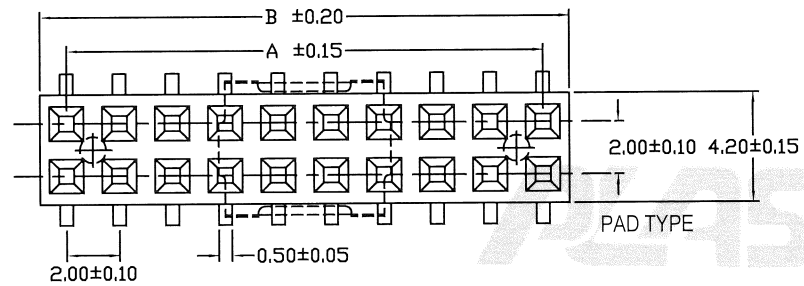
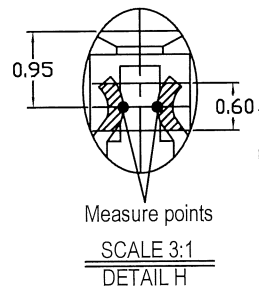
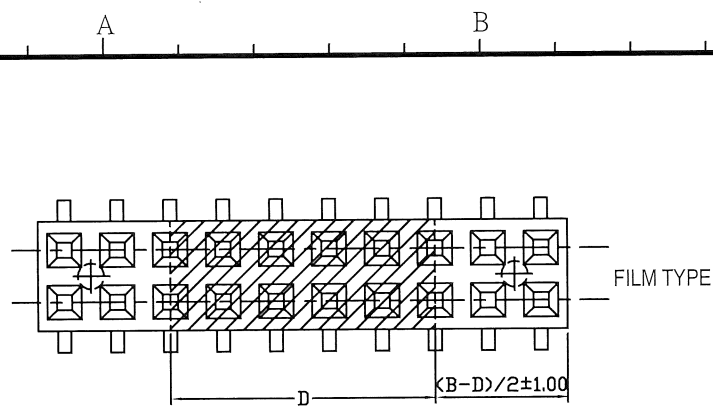


No. of Contacts	DIMENSIONS	
	A	B
8	6.00	8.00
10	8.00	10.00
12	10.00	12.00
14	12.00	14.00
16	14.00	16.00
18	16.00	18.00
20	18.00	20.00
22	20.00	22.00
24	22.00	24.00
26	24.00	26.00
28	26.00	28.00
30	28.00	30.00
32	30.00	32.00
34	32.00	34.00
36	34.00	36.00
38	36.00	38.00
40	38.00	40.00
42	40.00	42.00
44	42.00	44.00
46	44.00	46.00
48	46.00	48.00
50	48.00	50.00
52	50.00	52.00
54	52.00	54.00
56	54.00	56.00
58	56.00	58.00
60	58.00	60.00



版次	ECN 编码	描述		设计/日期
1	EL22110060	初版发行		江蒙_2022/11/16
		改前	改后	

- NOTES: (Unless otherwise specified)
- Dimension shall be interpreted per ANSI Y14.5M.
 - Materials:
Insulator material: High Temperature Thermoplastic, UL 94V-0; Color: Black.
Contact material: Phosphor Bronze.
 - Current Rating: 2 A.
 - Voltage Rating: 30V AC/DC.
 - Working Temperature: -40°C ~ +105°C.
 - Harmful material should be compliant to doc. "EI-0005" standards.
 - Product number matrix:

SPTAF-XX-X-X-*

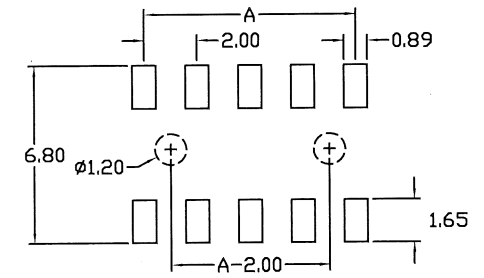
Number of Contacts

Contact Plating

Definition	Code
● Tin plated :	A
● Gold plated :	
flash B 15 U*	F
10 U*	E 30 U*
● Standard: B	

NULL:TUBE
C:FILM+REEL
F:FILM+TUBE
B : MPAD+REEL
E:MPAD+TUBE

0:With Locating peg
1:With Locating peg



RECOMMENDED PCB LAYOUT
(PCB TOLERANCE ±0.05)

胶膜	D	MPAD	C
含14PIN以下	4.50	含10PIN以下	4.00
不含14PIN以上	10.0	不含10PIN以上	6.50

	TOLERANCE TABLE		SCALE 1:1	DRAWN 江蒙	DATE 2022/11/16	DWG. NO. 600-0000-2320	TITLE	REV. 1
	X. ± 0.30	X.° ± 3°	UNIT mm	CHECK 李静涛	DATE 2022/11/17	PARTS NO.(INTENDED USE) SPTAF-XX-X-X-*	CUSTOMER DRAWING	SHEET 1/1
	.X ± 0.25	.X° ± 2°	SIZE A4	APPROVE 李静涛	DATE 2022/11/17			
	.XX ± 0.20							