

版次	ECN 编码	描述	设计/日期
1	EL22050099	初版发行	何晓明_2022/05/13
		改前	改后



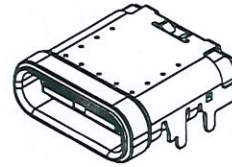
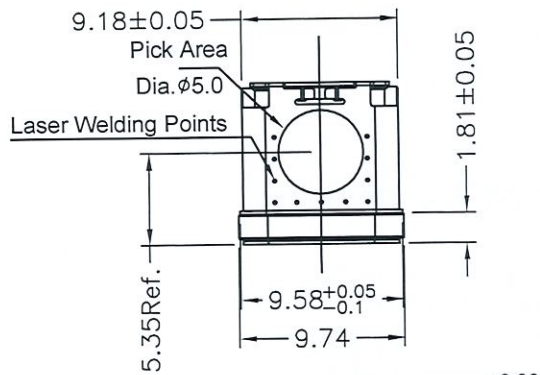
RoHS 2015

NOTES: (Unless otherwise specified)

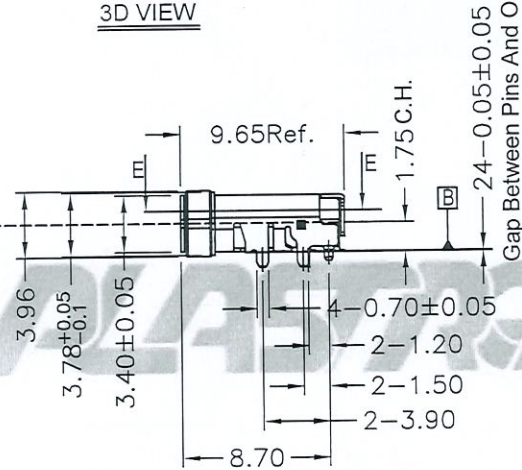
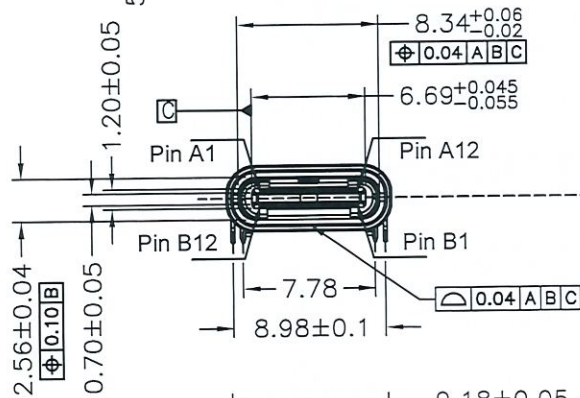
- Dimension shall be interpreted per ANSI Y14.5M.
- Materials:
Insulator material: LCP ,UL 94V-0;Color:Black.
Contact material: Copper alloy. Tin=0.12
Gold 30u"Plated On Contact Area,
Matt,Sn 100u"Min Plated On Soldering
80u" Ni Under Plated Overall
Mid-Gnd:SUS301 T=0.15mm, Ni Plated 80u" Min
Mate Ground:SUS304, T=0.12mm
Top Shell:SUS304,T=0.2mm,Ni Plated 80u" Min Over all
Shell:SUS316,T=0.20mm,Ni Plated 80u" Min
Gasket Ring:Silicone ,Color:Orange
- Current Rating: 5A Max.
- Voltage Rating: 20V.
- Working Temperature: -40°C ~ +105°C.
- Water protection IP5K2(acc.to ISO 20653,testing vertically without plug-water can not leak through the conn.)
- Harmful material should be compliant to doc. "EI-0005" standards.
- Product number matrix:

MCFDA024 K U 00

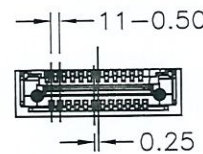
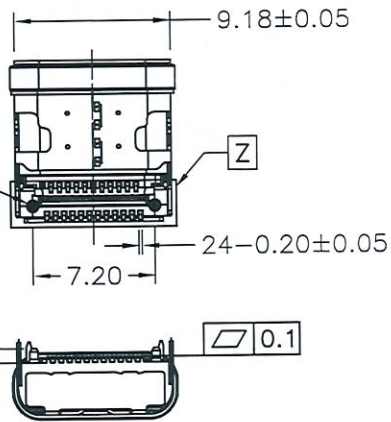
Plating Code:
Function area:
U: Plating Au 30u" Min.
P: Plating Au 15u" Min.
N: Plating Au 10u" Min.



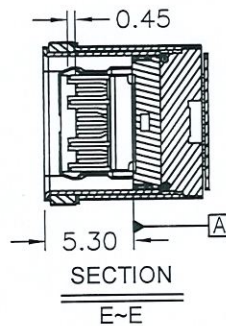
3D VIEW



Gap Between Pins And Outer Shell



DETAIL Z



SECTION E-E



TOLERANCE TABLE	
X. ± 0.30	X.° ± 2°
.X ± 0.25	.X° ± 1°
.XX ± 0.10	

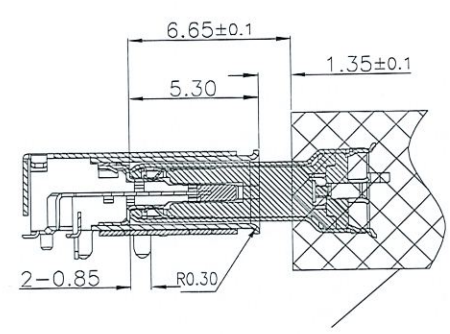
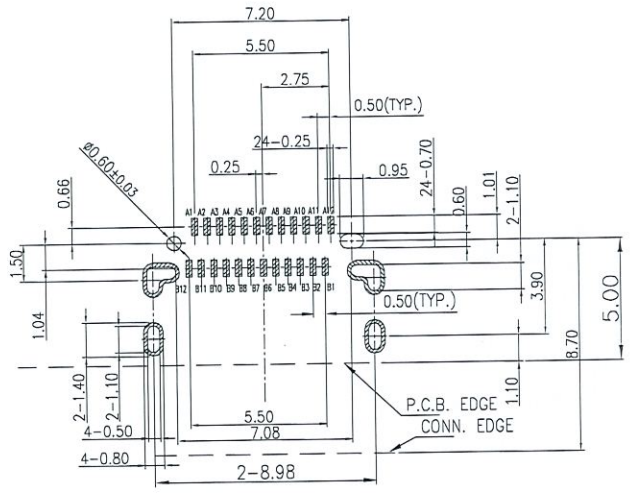
SCALE	1:1
UNIT	mm
SIZE	A4

DRAWN	何晓明	DATE	2022/05/13
CHECK	李晋涛	DATE	2022/05/13
APPROVE	李晋涛	DATE	2022/05/13

DWG. NO.	600-0000-2190
PARTS NO.(INTENDED USE)	MCFDA024KU00

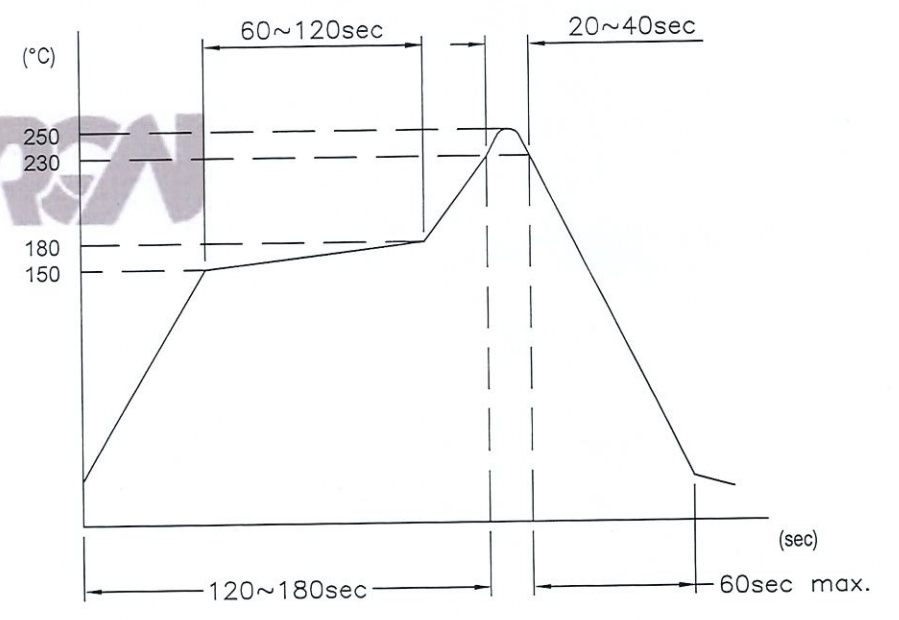
TITLE	CUSTOMER DRAWING
-------	------------------

REV.	1
SHEET	1/4



USB Type C Plug
Mating Drawing

IR REFLOW CONDITION
PREHEATING AREA 150°C FOR 60 TO 120 SEC. PEAK TEMPERATURE: 250°C
SOLDERING AREA 235±5°C OR 10 SEC. MAX. 230°C MIN. FOR 10~30 SEC.



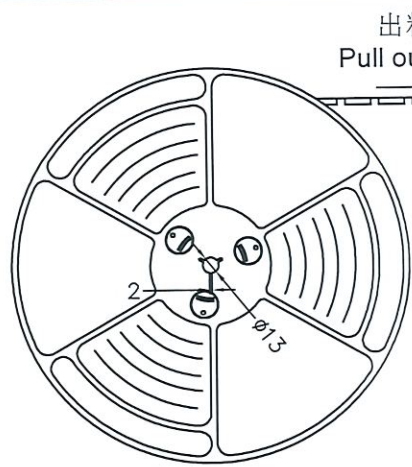
RECOMMENDED PCB LAYOUT (TOP VIEW)

GENERAL TOLERANCE ±0.05 (TH: 1.1~1.75mm)

NO.	PIN NUMBER	SIGNAL NAME	NO.	PIN NUMBER	SIGNAL NAME
1	A1	GND	13	B12	GND
2	A2	SSTXp1	14	B11	SSRXp1
3	A3	SSTXn1	15	B10	SSRXn1
4	A4	VBUS	16	B9	VBUS
5	A5	CC1	17	B8	SBU2
6	A6	Dp1	18	B7	Dn2
7	A7	Dn1	19	B6	Dp2
8	A8	SBU1	20	B5	CC2
9	A9	VBUS	21	B4	VBUS
10	A10	SSRXn2	22	B3	SSTXn2
11	A11	SSRXp2	23	B2	SSTXp2
12	A12	GND	24	B1	GND

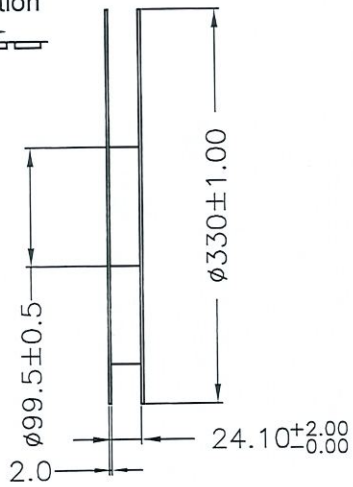


<p>TOLERANCE TABLE</p> <table border="1"> <tr><td>X. ± 0.30</td><td>X.° ± 3°</td></tr> <tr><td>.X ± 0.25</td><td>.X° ± 2°</td></tr> <tr><td>.XX ± 0.15</td><td></td></tr> </table>	X. ± 0.30	X.° ± 3°	.X ± 0.25	.X° ± 2°	.XX ± 0.15		<p>SCALE 1:1</p> <p>UNIT mm</p> <p>SIZE A4</p>	<p>DRAWN 何曉明</p> <p>CHECK 李景濤</p> <p>APPROVE 李景濤</p>	<p>DATE 2022/05/13</p> <p>DATE 2022/05/13</p> <p>DATE 2022/05/13</p>	<p>DWG. NO. 600-0000-2190</p> <p>PARTS NO. (INTENDED USE) MCFDA024KU00</p>	<p>TITLE CUSTOMER DRAWING</p>	<p>REV. 1</p> <p>SHEET 2/4</p>
	X. ± 0.30	X.° ± 3°										
	.X ± 0.25	.X° ± 2°										
	.XX ± 0.15											



出料方向
Pull out direction

出料方向
Pull out direction

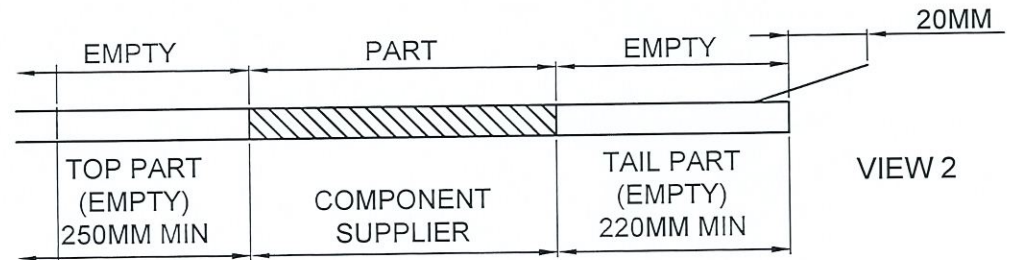


VIEW 1

备注 (NOTES):

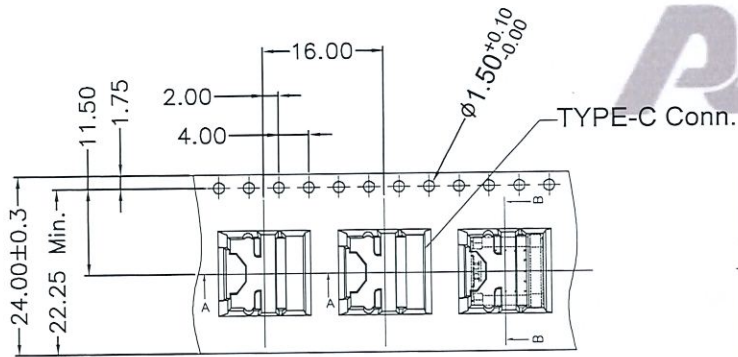
1. 带子引导长度
Lead tape length

转绕方向
Pull out direction

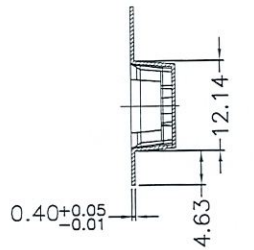


VIEW 2

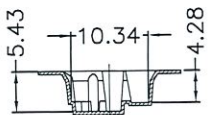
2. 上带剥拉力为: 0.2~1.3N(20gf~130gf)
Peeling off force of top tape : 0.2~1.3N(20gf~130gf)



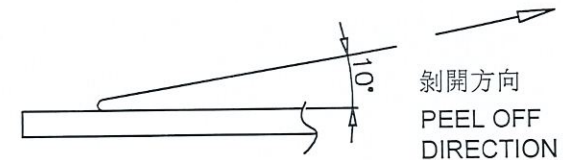
TYPE-C Conn.



SECTION B~B'



SECTION A~A'



剥开方向
PEEL OFF
DIRECTION

VIEW 3



TOLERANCE TABLE

X. ± 0.30	X.° ± 3°
.X ± 0.25	.X° ± 2°
.XX ± 0.20	

SCALE 1:1

UNIT mm

SIZE A4



DRAWN

何曉明

DATE

2022/05/13

CHECK

李景峰

DATE

2022/5/13

APPROVE

何曉明

DATE

2022/5/13

DWG. NO.

600-0000-2190

PARTS NO.(INTENDED USE)

MCFDA024KU00

TITLE

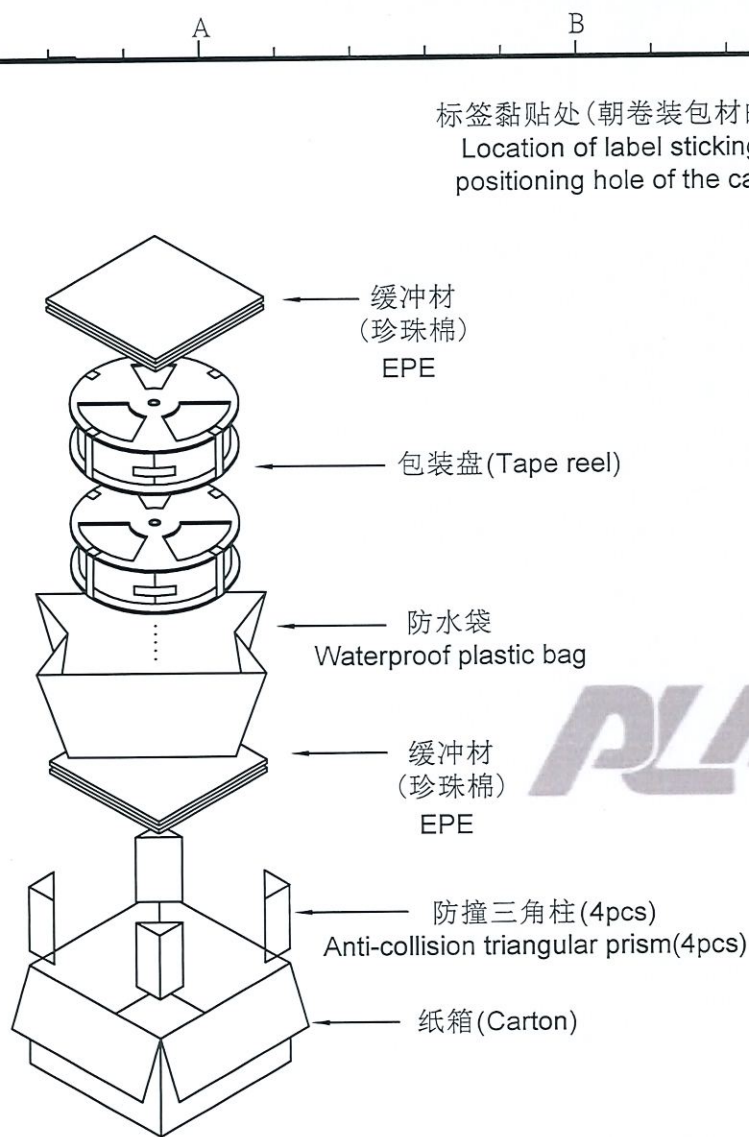
CUSTOMER DRAWING

REV.

1

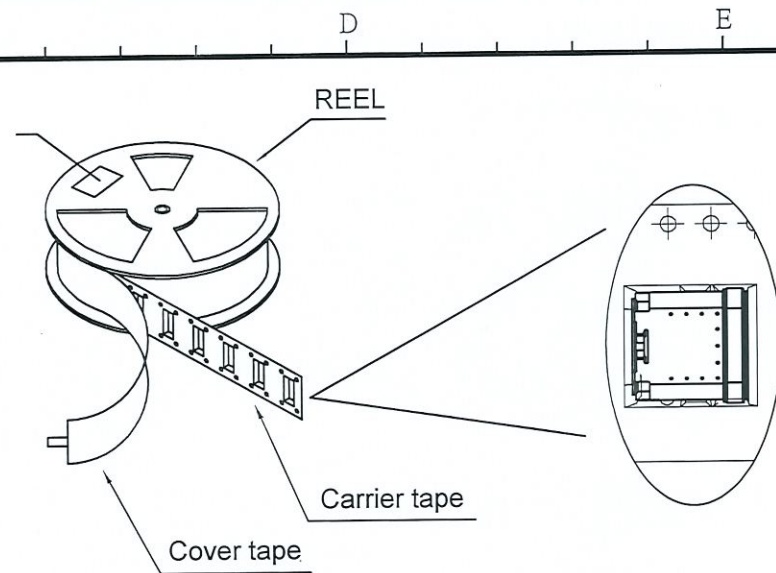
SHEET

3/4



VIEW 4

标签黏贴处 (朝卷装包材的小定位孔一侧)
Location of label sticking (label at small positioning hole of the carrier tape side)



VIEW 5

备注 (NOTES):

1. 每卷包装数量及每箱装箱数量如下表格。
Packing Q'ty of each reel & carton as below table shown.
2. 上胶带覆盖下包装带用自粘包装。
Use cover tape to cover and seal up.
3. 每个纸箱放2个珍珠棉。
Every carton use 2pcs EPE.
4. 将装满产品的卷盘放入纸箱并以胶带封口。
Put reels in the carton and use adhesive tape to seal up.

产品料号 (Product No.)	包装数量 (Packing Quantity)		
	PCS/REEL	REELS/CARTON	PCS/CARTON
MCFDA024KU00	700	7	4900

	TOLERANCE TABLE		SCALE 1:1	DRAWN 何晓明	DATE 2022/05/13	DWG. NO. 600-0000-2190	TITLE CUSTOMER DRAWING	REV. 1
	X. ± 0.30	X.° ± 3°	UNIT mm	CHECK 李景涛	DATE 2022/05/13			PARTS NO. (INTENDED USE) MCFDA024KU00
	.X ± 0.25	.X° ± 2°	SIZE A4	APPROVE 陈	DATE 2022/05/13			
	.XX ± 0.20							