

版次	ECN 编码	描述		设计/日期
1	EH19090171	初版发行		齐如军_2019/11/08
2	EL22100032	改前	改后	李晨涛_2022/10/12
		增加 D 尺寸		

- NOTES: (Unless otherwise specified)
- Dimension shall be interpreted per ANSI Y14.5M.
 - Materials:
Insulator material: High Temperature Thermoplastic, UL 94V-0; Color: Natural.
Contact material: Copper alloy.
 - Current Rating: 0.5A.
 - Voltage Rating: 50V AC/DC.
 - Working Temperature: -40°C ~ +105°C.
 - Harmful material should be compliant to doc. "EI-0005" standards.
 - Product number matrix:

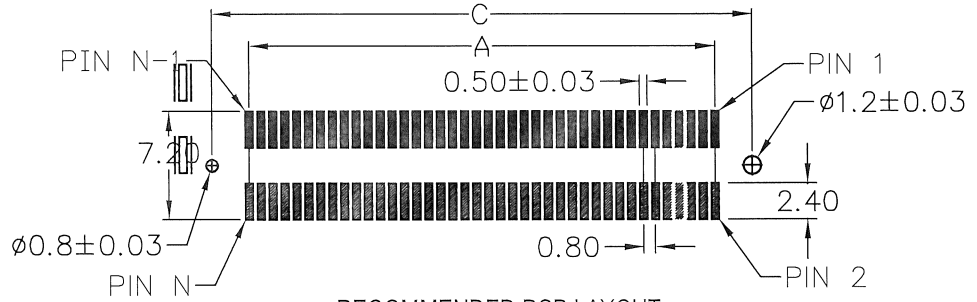
DECAAXXXBX00

Plating Code:

Definition	Code
● Tin plated	A
● Gold plated (Function area)	
flash B 15u"	F
10u" E 30u"	J
● Duplex plated (Function area)	
flash K 15u"	P
10u" N 30u"	U
● Standard: B	

Number of contacts
030~080: 30~80PIN
100~140: 100~140PIN
B: MPAD+REEL

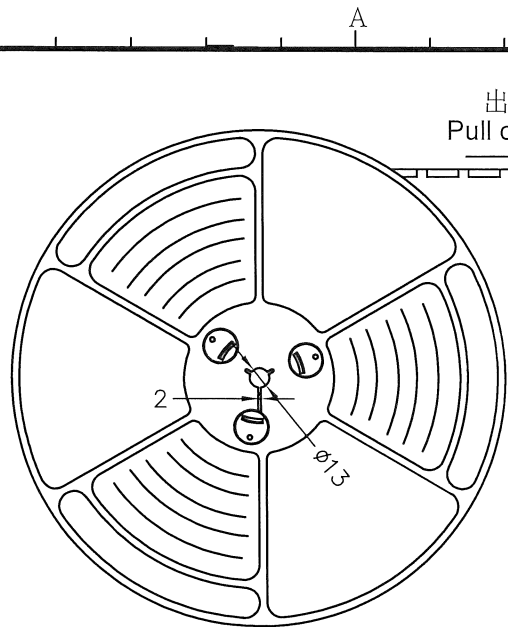
CIRCUITS	DIM.A	DIM.B	DIM.C	DIM.D
30	11.20	17.80	16.20	13.25
40	15.20	21.80	20.20	17.25
50	19.20	25.80	24.20	21.25
60	23.20	29.80	28.20	25.25
80	31.20	37.80	36.20	33.25
100	39.20	45.80	44.20	41.25
120	47.20	53.80	52.20	49.25
140	55.20	61.80	60.20	57.25



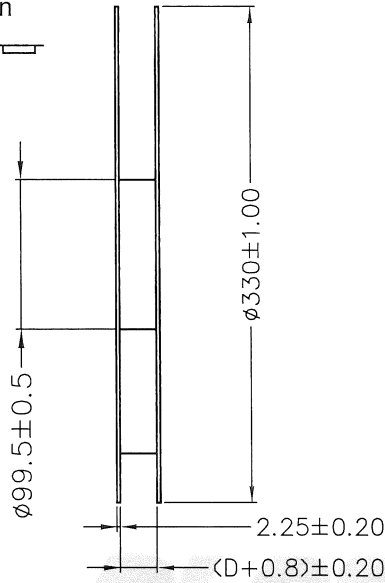
RECOMMENDED PCB LAYOUT
(PCB TOLERANCE ±0.05)



TOLERANCE TABLE	SCALE	2:1	DRAWN	李晨涛	DATE	2022/10/12	DWG. NO.	600-0000-2013	TITLE	REV.
	X. ± 0.30	X.° ± 3°	CHECK	<i>[Signature]</i>	DATE	2022/10/26				
	.X ± 0.25	.X° ± 2°	APPROVE	<i>[Signature]</i>	DATE	2022/10/26	2			
.XX ± 0.20		SIZE	A4							1/3



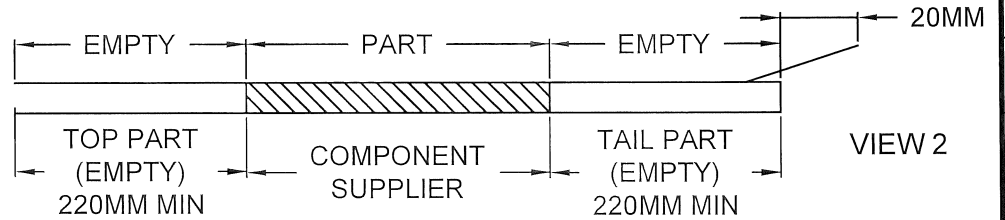
出料方向
Pull out direction



VIEW 1

备注 (NOTES):

- 带子引导长度
Lead tape length
转绕方向
Pull out direction



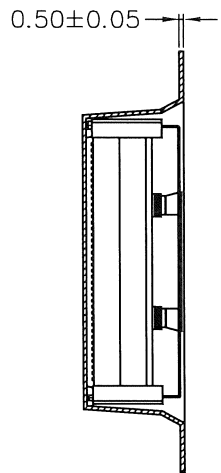
VIEW 2

- 上带剥拉力为: 0.2~1.3N (20gf~130gf)
Peeling off force of top tape :0.2~1.3N(20gf~130gf)

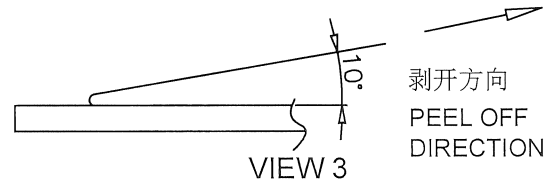
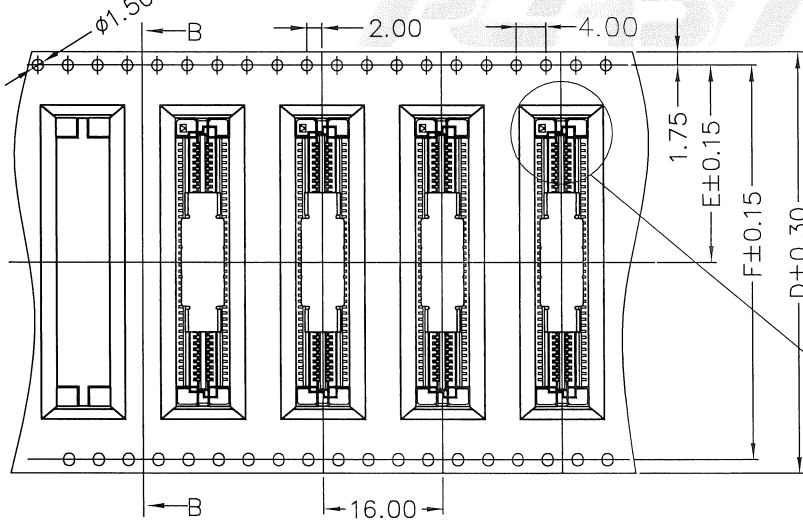
出货运输过程中一定注意: 卷带在运输过程中不能散开

This requirement should be applied at shipment:
The reel tape can not be separated during transportation.

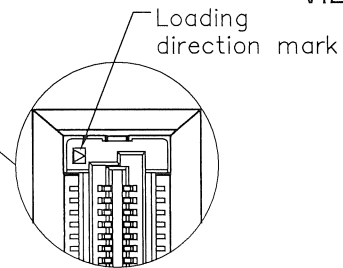
出料方向
Pull out direction



SECTION B-B



VIEW 3



ITEM	P/N	DIM.F	DIM.E	DIM.D
REEL& FILM+REEL& MPAD+REEL	30PIN	40.40	20.25	44.00
	40PIN	40.40	20.25	44.00
	50PIN	40.40	20.25	44.00
	60PIN	52.40	26.25	56.00
	80PIN	52.40	26.25	56.00
	100PIN	68.40	34.25	72.00
	120PIN	68.40	34.25	72.00
	140PIN	84.40	42.25	88.00



TOLERANCE TABLE	
X. ± 0.30	X.° ± 3°
.X ± 0.25	.X° ± 2°
.XX ± 0.20	

SCALE	1:1
UNIT	mm
SIZE	A4

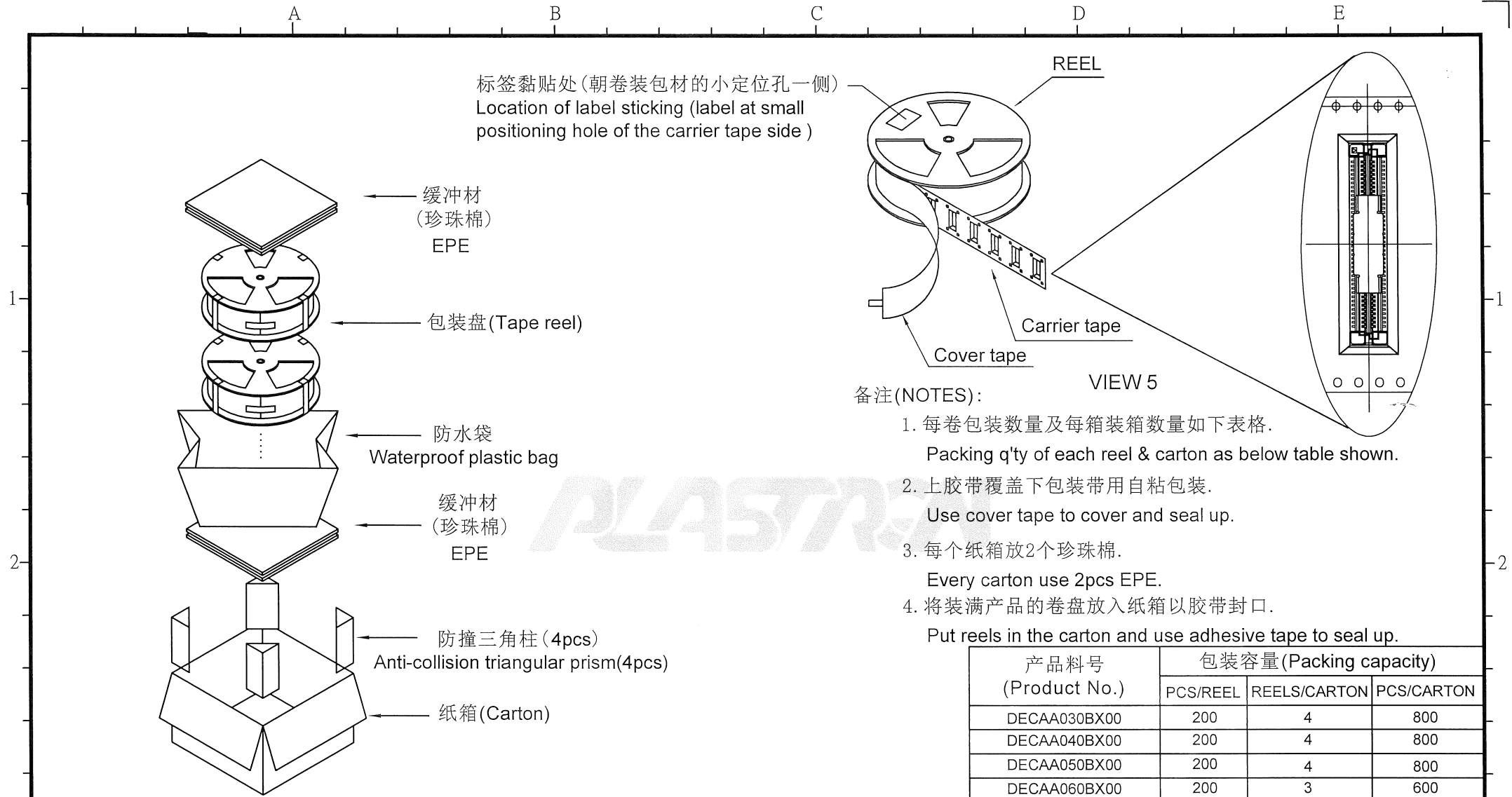
DRAWN	李晨涛
CHECK	1203/1
APPROVE	30/10

DATE	2022/10/12
DATE	2022/10/26
DATE	2022/10/26

DWG. NO.	600-0000-2013
PARTS NO. (INTENDED USE)	DECAAXXBX00

TITLE	CUSTOMER DRAWING
-------	------------------

REV.	2
SHEET	2/3



备注 (NOTES):

- 每卷包装数量及每箱装箱数量如下表格。
Packing q'ty of each reel & carton as below table shown.
- 上胶带覆盖下包装带用自粘包装。
Use cover tape to cover and seal up.
- 每个纸箱放2个珍珠棉。
Every carton use 2pcs EPE.
- 将装满产品的卷盘放入纸箱以胶带封口。
Put reels in the carton and use adhesive tape to seal up.

产品料号 (Product No.)	包装容量 (Packing capacity)		
	PCS/REEL	REELS/CARTON	PCS/CARTON
DECAA030BX00	200	4	800
DECAA040BX00	200	4	800
DECAA050BX00	200	4	800
DECAA060BX00	200	3	600
DECAA080BX00	200	3	600
DECAA100BX00	200	2	400
DECAA120BX00	200	2	400
DECAA140BX00	200	2	400

	TOLERANCE TABLE		SCALE 1:1	DRAWN 李晨涛	DATE 2022/10/12	DWG. NO. 600-0000-2013	TITLE	REV. 2
	X. ± 0.30	X. ° ± 3°	UNIT mm	CHECK <i>li chen tao</i>	DATE 2022/10/26			PARTS NO. (INTENDED USE) DECAAXXXBX00
	.X ± 0.25	.X ° ± 2°	SIZE A4	APPROVE <i>li chen tao</i>	DATE 2022/10/26			
	.XX ± 0.20							